

Each conference participant may receive mail from companies or individuals who have obtained names and addresses from course registrations as permitted by the Georgia Open Records Act.

706.542.1451 or melissak@uga.edu

For information/questions: Contact Ms. Melissa Kilpatrick at

conferences.

(except working animals, e.g., guide dogs) at the College of Veterinary Medicine
For courtesy and liability reasons, we prohibit children and domestic animals

Nov. 23 — Adv. Laparoscopic and Thoracoscopic Surgery

July 6 — Basic Gastrointestinal and Basic Soft Tissue Rigid Endoscopy

June 8 — Arthroscopy and Adv. Laparoscopic and Thoracoscopic Surgery

Feb. 17 — Basic Soft Tissue Rigid Endoscopy

on these dates:

College of Veterinary Medicine is not responsible for any charges related to travel. Course fees will be fully refunded for cancellations made by 5 p.m. ET.

Course Cancellation Policy: If a course is cancelled for any reason, the

For participant comments, and images from the
courses, visit www.vet.uga.edu/mis/training/

* Please bring scrubs for the lab portion.

in the lectures and laboratory.

* All surgical equipment for the lab will be provided by corporate sponsors
and the University of Georgia. Personally-owned equipment is prohibited

Athens, GA 30602-7371

The University of Georgia

College of Veterinary Medicine

Room H-218-B

Melissa Kilpatrick

• Fax: 706.583.0350

• Phone: 706.542.1451 (Monday-Friday, 8 a.m. to 5 p.m.)

• Mail: Please call if you need a paper registration form.

Additional options for registering include:

www.vet.uga.edu/CE/calendar/

For complete and up-to-date information on

all of our courses, visit our website:

Course Registration Information

The UGA College of Veterinary Medicine, founded in 1946, is dedicated to training future veterinarians, to conducting research related to animal and human diseases, and to providing veterinary services for animals and their owners. Research efforts are aimed at enhancing the quality of life for animals and people, improving the productivity of poultry and livestock, and preserving a healthy interface between wildlife and people in the environment they share. The college enrolls 102 DVM students each fall out of more than 560 who apply. In addition, the College currently has 158 graduate students, interns and residents.

December 7-8: \$89 per night; block code ENDOSCOPYPDEC

July 19-22: \$89 per night; block code ENDOSCOPYJUL

June 20-23: \$99 per night; block code ENDOSCOPYJUN

March 2-3: \$89 per night; block code ENDOSCOPYPMAR

1197 South Lumpkin St.; 800.884.1381

The Georgia Center Hotel: www.georgiacenteruga.edu/cch

Free shuttle service to the College when requested at check-in.

\$94 per night; block code UVE for all conferences.

197 E. Broad St.; 706.549.4433

Holiday Inn-Athens: www.hi-athens.com

Hotel rooms have been blocked at:

Hotel Accommodations: Call, e-mail or check our website for further

Coverdell Building.

Carton Street Deck, a paid deck located between the Coliseum and the

is reserved for client parking. During the week, parking is available at the

Veterinary Medicine. Please do not park in the hospital parking lot; this

Parking lots S16, S17 and S10 are most convenient to the College of

Parking: On weekends, parking is permitted in reserved parking areas.

shuttle services. For driving directions, visit www.vet.uga.edu/directions.

located about 80 miles southwest of Athens, with rental car, ground and air

Travel Information: Hartsfield-Jackson Atlanta International Airport is

located about 80 miles southwest of Athens, with rental car, ground and air

Limit Classes to Small Groups

Demonstrate Minimally Invasive Surgical Treatments

Offer You Better Diagnostic Tools

Use Innovative Teaching Techniques

Offer You Experienced Surgical and Medical Instructors

Teach You *When and How* to Scope

Our courses:

Endoscopic Course Schedule 2012

BASIC SMALL ANIMAL SOFT TISSUE RIGID ENDOSCOPY

March 3-4 (Saturday and Sunday)

July 22-23 (Sunday and Monday)

Lecture & Lab...\$1,975* / Technician accompanying veterinarian...\$175

SMALL ANIMAL ARTHROSCOPY

June 21-22 (Thursday afternoon and Friday)

Lecture & Lab...\$1,475* / Technician accompanying veterinarian...\$175

ADVANCED LAPAROSCOPIC AND THORACOSCOPIC SURGERY

June 23-24 (Saturday and Sunday)

December 8-9 (Saturday and Sunday)

Lecture & Lab...\$1,975* / Technician accompanying veterinarian...\$175

BASIC SMALL ANIMAL GASTROINTESTINAL ENDOSCOPY

July 20-21 (Friday and Saturday)

Lecture & Lab...\$1,975* / Technician accompanying veterinarian...\$175

*Veterinarian registration includes a copy of *Small Animal Endoscopy* (2011),

a \$165 value

Teaching Staff from the UGA College of Veterinary Medicine

Dr. Clarence Rawlings
Symposia Coordinator and
Professor Emeritus

Dr. Steffen Sum (July)
Assistant Professor

Dr. Cynthia Ward (July)
Professor

Dr. MaryAnn Radlinsky
Associate Professor

Dr. Steve Budenberg (June)
Professor

Dr. Chad Schmiedt
Assistant Professor

Guest Teaching Staff

Dr. Todd Tams (July)
VCA-Antec Inc., Los Angeles, Calif.

Dr. John Payne (June)
Pittsburgh Veterinary Specialty &
Emergency Clinic, Penn.



The University of Georgia is committed to principles
of equal opportunity and affirmative action.

Endoscopy

Flexible and Rigid Scopes to Diagnose and Treat

Arthroscopy, Cytoscopy, Gastrointestinal Endoscopy, Laparoscopy,
Rhinoscopy, Thoracoscopy, and Video Otoscopy

Schedule of 2012 Courses



**Veterinary
Endoscopy
Training
Symposia**



THE UNIVERSITY OF GEORGIA
College of Veterinary Medicine

www.vet.uga.edu/mis

BASIC SMALL ANIMAL SOFT TISSUE RIGID ENDOSCOPY

15.0 Continuing Education Hours (lecture and lab)

March 3-4, 2012 (Saturday and Sunday)

July 22-23, 2012 (Sunday and Monday)

The basic rigid endoscopy course is introductory to develop skills considered standard of practice for the high-quality general practice. These includes diagnostic procedures (bladder, ear, nose and abdomen) that can be done daily in practice. The course is designed to get veterinarians started in minimally-invasive surgery—particularly laparoscopic spays, gastropexies, and calculi removal.

DAY 1

8–8:30 a.m.	Registration and continental breakfast
8:30–8:40 a.m.	Course overview
8:40–9:20 a.m.	Instrumentation and endoscopy equipment
9:20–10:30 a.m.	Cystoscopy: techniques and case examples
10:30–11:10 a.m.	Refreshment break and psychomotor exercises in laboratory
11:10–Noon	Rhinology: techniques and case examples
Noon–12:30 p.m.	Otoscopy: techniques and case examples
12:30–1:15 p.m.	Lunch with the instructors
1:15–4:30 p.m.	Hands-on laboratory with cystoscopy, rhinoscopy, and otoscopy
4:30–5 p.m.	Participant roundtable: What did I learn?

DAY 2

8–8:30 a.m.	Continental breakfast
8:30–9:20 a.m.	Laparoscopy: anesthesia and instrumentation
9:20–10:20 a.m.	Laparoscopy: methodology and case examples
10:20–10:50 a.m.	Refreshment break and using energy equipment in laboratory
10:50–11:20 a.m.	Cancer staging and laparoscopy: case examples
11:20–12:15 p.m.	Introduction to minimally-invasive surgery
12:15–1 p.m.	Lunch with the instructors
1–4:30 p.m.	Hands-on laparoscopy laboratory with biopsies (liver, kidneys, pancreas, and small intestines), incisional gastropexy, spay and cystoscopic calculi removal.
4:30–5 p.m.	Participant roundtable: What did I learn?

BASIC SMALL ANIMAL GASTROINTESTINAL ENDOSCOPY

15.0 Continuing Education Hours (lecture and lab)

July 20-21, 2012 (Friday and Saturday)

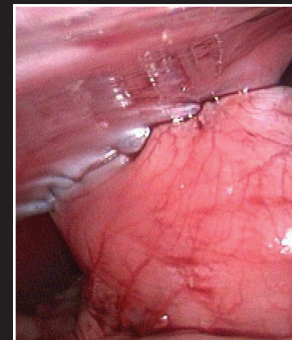
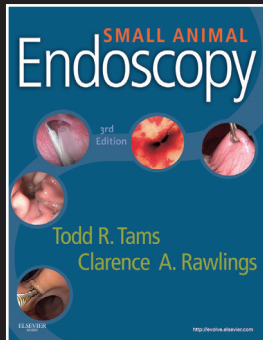
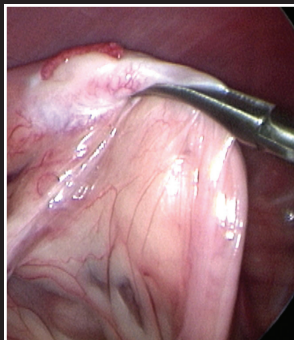
This flexible endoscopy course is also introductory, with plenty of laboratory practice for the practitioner to perform upper and lower gastrointestinal endoscopy in patients.

DAY 1

8–8:30 a.m.	Registration and continental breakfast
8:30–8:40 a.m.	Course overview
8:40–10:30 a.m.	GI endoscopy: indications, case examples, equipment selection, how to become proficient
10:30–11 a.m.	Refreshment break and practice with endoscopy training models
11–12:30 p.m.	Techniques for esophagoscopy, gastroscopy, and duodenoscopy with biopsy techniques
12:30–1:15 p.m.	Lunch with the instructors
1:15–4:30 p.m.	Hands-on laboratory with esophagoscopy, gastroscopy, and duodenoscopy in models and anesthetized dogs
4:30–5 p.m.	Participant roundtable: What did I learn?

DAY 2

8–8:30 a.m.	Continental breakfast
8:30–10:30 a.m.	Integration of endoscopy into your practice: gaining client compliance with recommendations, how to charge; disorders and cases diagnosed with upper GI endoscopy
10:30–11 a.m.	Refreshment break and practice with endoscopy training models
11–Noon	Colonoscopy: indications, cases, colon prep and colonoscopy techniques
Noon–12:30 p.m.	Endoscopic gastric foreign body retrieval
12:30–1 p.m.	Lunch with the instructors
1–4:30 p.m.	Hands-on laboratory with colonoscopy and upper GI flexible endoscopy
4:30–5 p.m.	Participant roundtable: What did I learn?



For course information and comments from course participants, visit us on the Web: www.vet.uga.edu/mis/training/

SMALL ANIMAL ARTHROSCOPY

11.0 Continuing Education Hours (lecture and lab)

June 21-22, 2012 (Thursday afternoon and Friday)

Arthroscopy is introductory, but is best attended by those who do a lot of traditional joint surgery or who have done some endoscopy. Although basic procedures are performed, the instructors and course can provide more advanced training for those who have mastered basic arthroscopy skills.

DAY 1

1:45–2 p.m.	Registration
2–3:45 p.m.	Instrumentation and principles
3:45–4 p.m.	Refreshment break
4–5 p.m.	Anatomic landmarks, normal anatomy and pathology (elbow)
5–6 p.m.	Anatomic landmarks, normal anatomy and pathology (shoulder, stifle, hock, hip and carpus)

DAY 2

8–8:30 a.m.	Continental breakfast
8:30 a.m.–Noon	Hands-on laboratory on (cadaver) elbow, shoulder and stifle: portal development, joint exploration, triangulation
Noon–1 p.m.	Lunch with the instructors
1–4:30 p.m.	Hands-on laboratory: instrument joints, sub-total coronoidectomy, microfracture technique, biceps tendonectomy, meniscal observation and probing
4:30–5 p.m.	Participant roundtable: What did I learn?

ADVANCED LAPAROSCOPIC/THORACOSCOPIC SURGERY

15.0 Continuing Education Hours (lecture and lab)

June 23-24, 2012 (Saturday and Sunday)

December 8-9, 2012 (Saturday and Sunday)

The advanced course is designed for people who have performed some endoscopy or taken a basic course. This is the most actively-changing course as endoscopic treatments are constantly modified. Participants will be divided into small surgery teams, each of which may choose the procedures (listed on the website) they wish to learn.

DAY 1

8–8:30 a.m.	Registration and continental breakfast
8:30–8:45 a.m.	Course overview
8:45–10 a.m.	Laparoscopy: anesthesia, instrumentation, techniques, exploration/biopsies
10–10:45 a.m.	Refreshment break with psychomotor skills in lab
10:45–12:30 a.m.	Minimally-invasive surgical treatments
12:30–1:15 p.m.	Lunch with the instructors
1:15–1:45 p.m.	Endoscopic knot tying and LigaSure
1:45–2:30 p.m.	Thoracoscopy: anesthesia, airway management, instrumentation
2:30–3:15 p.m.	Break with endoscopy skill development continued: knot tying and suturing, LigaSure
3:15–4:15 p.m.	Thoracoscopy treatments with case presentations
4:15–4:30 p.m.	Lab orientation for Day 2
4:30–5 p.m.	Participant roundtable: What did I learn?

DAY 2

8–8:30 a.m.	Continental breakfast
8:30 a.m.–Noon	Laparoscopy techniques in lab
Noon–1 p.m.	Lunch with the instructors
1–4:30 p.m.	Laparoscopy followed by thoracoscopy in lab
4:30–5 p.m.	Participant roundtable: What did I learn?